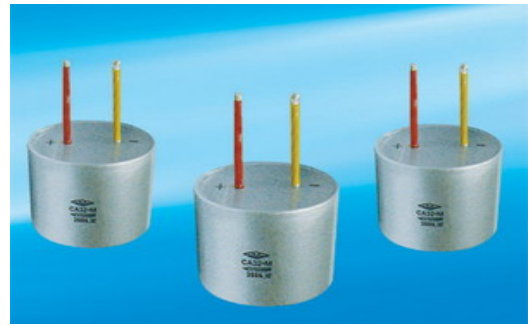


1、SCOPE

This specification applies to CA32 series high capacitance wet tantalum electrolytic capacitor produced by Shenzhen Be-Top Electronic Components Co., Ltd.



2、Brief Introduction

CA32 series high-capacitance wet electrolyte tantalum capacitors are metal coating sealed with polar radial leads. The series capacitors are characterized by low DC Leakage, stable performances, high reliability and wide capacitance range and wide working temperature range. CA32 series meets the standard QJ/PWV79-2002 and it is widely used in DC or pulse circuits of communication equipments.

3、General Specification

- 1) Operating Temperature: -55 °C ~+125 °C (using derating voltage when the temperature is higher than 85 °C). (see table 1)
- 2) Capacitance Tolerance: ±10% (K) , ±20% (M)
- 3) Current Leakage at Room Temperature:

$$I_0 \leq 0.008 C_R U_R (\mu A)$$
- 4) Dissipation Factor at 25 °C, 85 °C 125 °C. (see table 1).
- 5) Product Dimension and max weight (see table 2).

Table 1: Relation between Rated Voltage, Derating Voltage and Capacitance

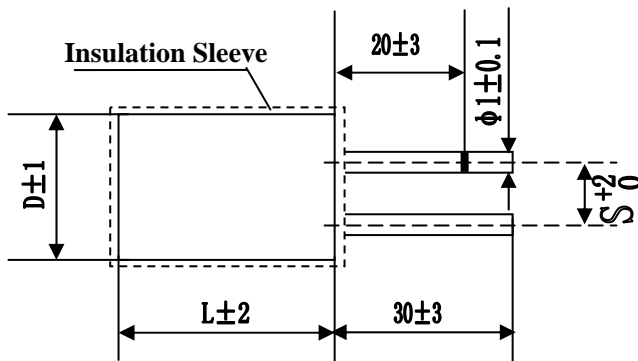
Rated Voltage $U_R(V)$	Derating Voltage $U_c(V)$	Case Code	Capacitance $C_R(\mu F)$	DF (%) 25 °C ,85 °C ,125 °C	Impedance (Ω)-55 °C, 100HZ	Rated Voltage $U_R(V)$	Derating Voltage $U_c(V)$	Case Code	Capacitance $C_R(\mu F)$	DF (%) 25 °C ,85 °C ,125 °C	Impedance (Ω)-55 °C, 100HZ
10	6.3	1	3300	45	11	40(32)	25	4	6800	55	7
		1	4700	40	10			4	10000	55	7
		2	6800	40	10	63(50)	40	1	680	30	22
		2	8200	40	10			1	1000	30	18
		3	10000	40	10			2	1500	30	12
		3	15000	45	9			3	2200	30	10
		4	22000	55	9			3	3300	30	10
		4	33000	55	8			4	4700	55	9
16	10	1	2200	40	12	70	50	4	6800	55	9
		1	3300	35	10			1	470	25	20
		2	4700	40	10	1	680	25	20		
		3	6800	35	10	2	1000	25	25		
		3	8200	40	10	2	1500	30	20		

Rated Voltage $U_R(V)$	Derating Voltage $U_c(V)$	Case Code	Capacitance $C_R(\mu F)$	DF (%) 25 °C, 85 °C, 125 °C	Impedance (Ω)-55 °C, 100HZ	Rated Voltage $U_R(V)$	Derating Voltage $U_c(V)$	Case Code	Capacitance $C_R(\mu F)$	DF (%) 25 °C, 85 °C, 125 °C	Impedance (Ω)-55 °C, 100HZ
16	10	3	10000	45	9	70	50	3	2200	30	20
		4	15000	55	9			4	3300	35	18
		4	22000	55	9			4	4700	35	15
25	16	1	1500	45	18	100(90)	63	1	330	20	20
		1	2200	35	15			1	470	20	15
		2	3300	35	13			2	680	20	15
		2	4700	35	10			2	1000	20	12
		3	6800	36	10			3	1500	20	11
		3	8200	40	10			3	2200	20	8
		4	10000	55	10			4	3300	30	8
40(32)	25	4	15000	55	9	125	75	1	220	20	28
		1	1000	40	12			2	330	15	19
		1	1500	30	11			2	470	20	12
		2	2200	30	8			3	680	15	12
		3	3300	30	8			3	1000	20	12
		3	4700	30	8			4	1500	30	11

Table 2: Product Dimension and Max Weight

Case Code	Max Weight(g)	Without Insulation Sleeve (mm)		S_0^{+2} (mm)
		$D \pm 0.5$	$L \pm 2$	
1	50	22	40	7
2	70	26	40	9
3	150	34	40	11
4	250	50	42	15

Figure of Product



How to order

CA32-228M025

CA32	228	M	025
Type	Capacitance	Tolerance	Rated Voltage
CA32 Series high-capacitance wet tantalum capacitor	228=2200 μ F	M= \pm 20% S=-10%~+30%	10V=010 16V=016 25V=025 40V=040 50V=050 63V=063 75V=075 100V=100 125V=125