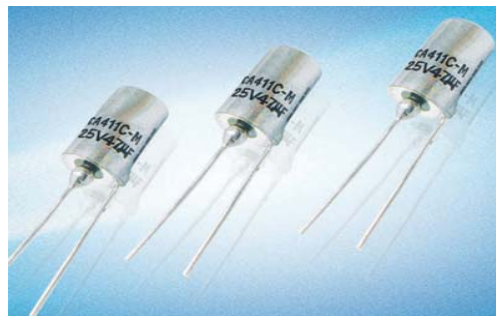


1、SCOPE

This specification applies to CA411 series radial solid tantalum electrolytic capacitor produced by Shenzhen Be-Top Electronic Components Co., Ltd.



2、Brief Introduction

CA411 series radial solid electrolyte tantalum capacitors are fully sealed and metal coating sealed with polar radial leads. The series capacitors are characterized by small size, low DC Leakage and dissipation factor, stable performances and high reliability. CA411 series meets the standard QJ/PWV9-2000 and it is widely used in DC or pulse circuits of communication equipments and some other testing equipments.

3、General Specification

- 1) Operating Temperature: $-55\text{ }^{\circ}\text{C} \sim +125\text{ }^{\circ}\text{C}$ (using derating voltage when the temperature is higher than $85\text{ }^{\circ}\text{C}$). (see table 1)
- 2) Capacitance Tolerance: $\pm 10\%$ (K) , $\pm 20\%$ (M)
- 3) Current Leakage at Room Temperature:
 $I_0 \leq 0.01 C_R U_R (\mu\text{A})$ or $0.5\mu\text{A}$ (whichever is greater)
- 4) Dissipation Factor at $-55\text{ }^{\circ}\text{C}$, $25\text{ }^{\circ}\text{C}$, $85\text{ }^{\circ}\text{C}$ $125\text{ }^{\circ}\text{C}$. (see table 2).
- 5) Product Dimension and max weight (see table 3).

Table 1: Relation between Rated Voltage, Derating Voltage and Capacitance

Rated Voltage $U_R(\text{V})$	6.3	10	16	25	32	40	63
Derating Voltage $U_C(\text{V})$	4	6.3	10	16	20	25	40
Case Code	Capacitance $C_R(\mu\text{F})$						
1	6.8 10	3.3 4.7 6.8	2.2 3.3	1.5 2.2	1.0 1.5	0.68 1.0	0.22 0.33 0.47
2	15 22 33 47 68	10 15 22 33 47	4.7 6.8 10 15 22 33	3.3 4.7 6.8 10 15	2.2 3.3 4.7 6.8 10	1.5 2.2 3.3 4.7 6.8	0.68 1.0 1.5 2.2 3.3
3	100	68 100	47 68	22 33	15	10 15	4.7
4	150 220	150	100	47 68	22 33	22 33	6.8 10
5	330 470	220 330	150	100	47 68	47	15 22
6	680 1000	470 680	220 330	150 220	100 150	68 100	33 47

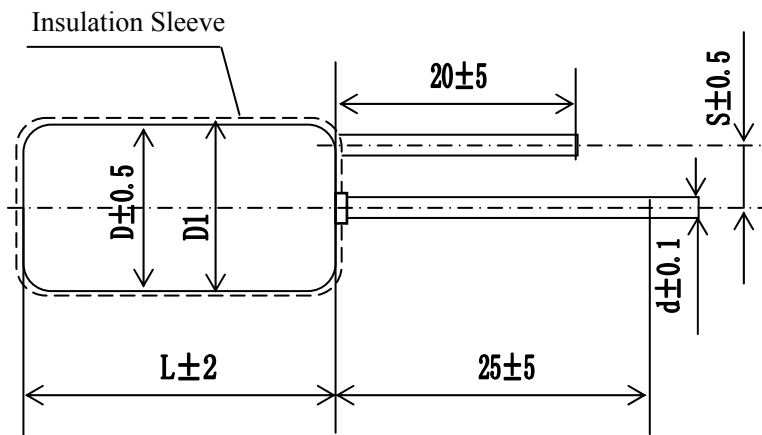
Table 2: Electrical Characteristics

Capacitance C_R (μF)	Change of Capacitance (%)			Max					
				Dissipation Factor $\text{tg } \delta$ (%)				Leakage Current (μA)	
	-55°C	85°C	125°C	25°C	-55°C	85°C	125°C	85°C	125°C
≤ 1	± 8	± 8	± 10	3	3			$8I_0$	$10I_0$
1.5~68				5	5				
100~330				6	6				
470~1000				8	8				

Table 3: Product Dimension and Max Weight

Case Code	Max Weight (g)	Without Insulation Sleeve		With Insulation Sleeve		$d \pm 0.1$ (mm)	$S \pm 0.5$ (mm)
		$D \pm 0.5$ (mm)	$L \pm 2$ (mm)	$D_1 \text{max}$ (mm)	$L \text{max}$ (mm)		
1	0.7	3.2	8	4.0	10	0.4	0.8
2	2.5	5	12	5.8	14	0.6	1.3
3	3.5	6	14	6.8	16	0.6	1.6
4	6.0	8	14	8.8	16	0.8	2.0
5	10.0	8	22	8.8	24	0.8	2.0
6	16.0	10	22	10.8	24	0.8	4.0

Figure of Product



How to order

CA411-106M025

CA411	106	M	025
Type	Capacitance	Tolerance	Rated Voltage
CA411 Series radial solid tantalum capacitor	106=10 μF	K=±10% M=±20%	6.3V=006 10V=010 16V=016 25V=025 32V=032 40V=040 63V=063